



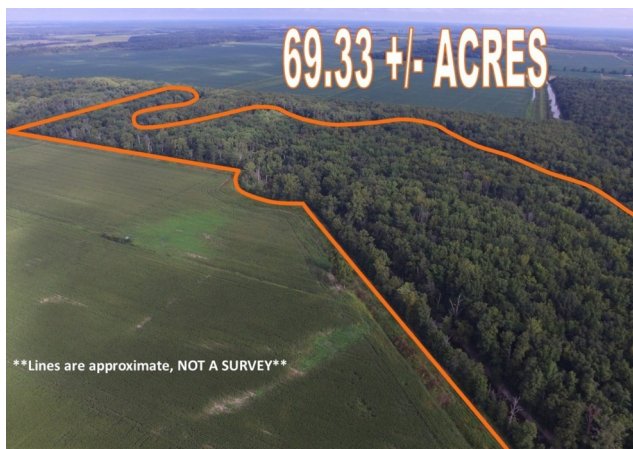
"See the difference **INTEGRITY** makes!"

301 ILLINOIS ROUTE 15 (WEST)
Albion, IL 62806 (618) 445-2267

Dustin Hawkins, Designated Managing Broker/Auctioneer
 Mobile: (618) 302-0325 (License #471.000893/441.002027)

Real Estate Brokers:
 Tina Wells (618) 599-0186
 Cindy Hodgson (618) 384-8594

Rhonda Colyer (618) 445-1527
 Lyndell Rice (618) 384-6563
 Cory Ristvedt (618) 839-5999



WAYNE COUNTY LAND

CR 2800 E & CR 1975 N

Mt. Erie, IL 62446

Asking Price: \$370,000

Information About Listing

County	Wayne (Mt. Erie Township)
PIN	17-11-009-013-11; 17-02-002-005-10; 17-02-002-001
Lot Size m/l	69.33 +/- Acres, Surveyed
Property Type	Timber/Recreation
Property Taxes m/l	\$327.42 (no exemptions at current assessment)
School District	North Wayne CUSD 200
Water	n/a
Sewer	n/a

Notes

Legal Description: contact agent for full legal description

GPS Coordinates: 38.54392, -88.17813

More Features...almost 1 mile of Little Wabash River frontage; levee; mature timber; EXCELLENT deer and waterfowl hunting

Additional Information...the seller's mineral interest, if any, will be included in the sale; additional adjacent acreage available for purchase

******Property lines in above photo are approximate...FOR REFERENCE ONLY******

Information herein is considered accurate, but is not warranted. All measurements, taxes, utilities, and age are approximate. Appliances not warranted. **m/l = more or less**

integritylistings.net • integrityauctions.net • facebook.com/integritysells